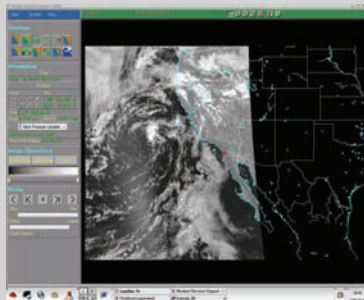
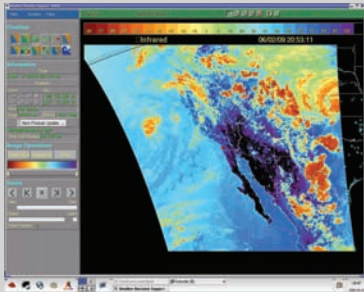


# 0.61m DUAL BAND MILITARY PORTABLE ANTENNA

## TP-800 Series



0.61m Antenna



### PRODUCT OVERVIEW

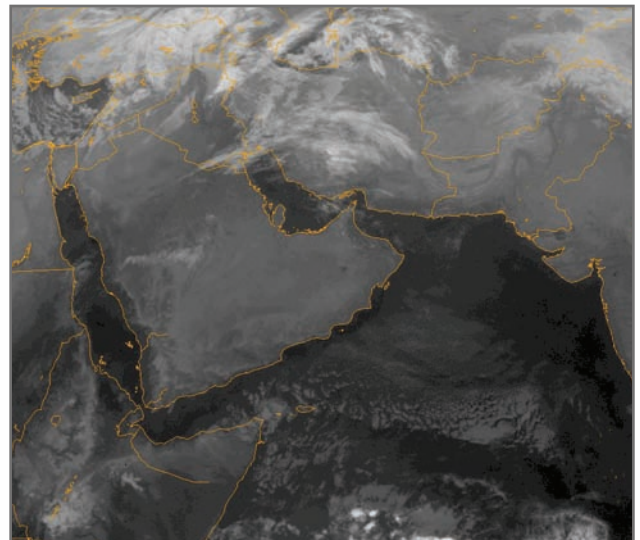
The 0.61m Dual Band Military Portable Antenna was designed to eliminate the need for two separate antennas in order to collect direct-broadcast weather and environmental data from the NOAA and DMSP series of low-earth-orbiting (LEO) satellites.

Ideal for field operations where time, transportation, and manpower are at a premium, the TP-800 series is easily deployed within 10 minutes. The TP-800 is designed to complement current deployments of the military systems that receive and process data from polar orbiting meteorological satellites.

The TP-800 provides joint mission interoperability: naval, air, and ground forces can now utilize identical equipment to exploit real-time satellite meteorological data, from imagery to vertical sounders.

### Key Features

- Easy to setup, operate and maintain
- High reliability for mission critical operations
- Theater-wide coverage
- Low maintenance cost and power consumption
- Unique Feed Design
- Compact Design
- Multi-mission
- L/S-Band Capability
- Lightweight - Man Portable



13000 Gregg Street, Suite A  
Poway, California 92064 USA

Tel: 1-858-746-1100

Fax: 1-858-746-1199

sales@seaspace.com

www.seaspace.com

EARTH ON DEMAND

# 0.61m DUAL BAND MILITARY PORTABLE ANTENNA

TP-800 Series

## SYSTEM SPECIFICATIONS

Reflector		Feed	
F/D Ratio	0.333 ratio	Construction	Helical
Surface Geometry	Shaped Parabola	Polarization	RHCP
Effective Diameter	0.60m	Input Frequency	1650-2270 MHz
Surface Tolerance	0.01 inches		
Material	Aluminum		
LNA / Downconverter		RF Performance	
Input Frequency	1680-1710 MHz L-Band 2207-2267 MHz S-Band	Antenna Gain	17 dBic L-Band 20 dBic S-Band
Output Frequency	115 -145 MHz L-Band 92-152 MHz S-Band	Aperture Efficiency	60%
LO Frequency	1565 MHz L-Band 2115 MHz S-Band	Antenna Noise Temp.	35 K
Noise Temperature	0.7 max@ 23°C L/S-Band Max	Total System Noise Temp.	85.7 K
Output Local Leakage	-30 dBm Max L/S-Band	System G/T	0.26 dB-K L-Band 2.69 dB-K S-Band
Gain Flatness	≤2 dB Full Band L/S-Band		
In/Out Connector	SMA		
Input Voltage	10.5 ~ 13.5 VDC L-Band 16.5 ~ 18.0 VDC S-Band		
Current	250 mA Max		

### Models

TP-800C - includes antenna pedestal, reflector, feed, RF electronics, radome (top and base), tripod with legs, camouflage covers, basic spares kit, and O&M Manual.

TP-800M - includes antenna pedestal, reflector, feed, RF electronics, radome base, basic spares kit, and O&M Manual.

TP-800P - includes antenna pedestal, reflector, feed, RF electronics, basic spares kit, and O&M Manual.

TP-850C - includes antenna pedestal, reflector, feed, RF electronics, radome (top and base), stiffener for post mount, camouflage covers, basic spares kit, and O&M Manual.

### Telemetries

L-Band: NOAA HRPT, FengYun CHRPT, METOP AHRPT, LRIT

S-Band: DMSP RTD, Coriolis WindSat (+/- 25 degrees elevation)



13000 Gregg Street, Suite A  
Poway, California 92064 USA

Tel: 1-858-746-1100

Fax: 1-858-746-1199

sales@seaspace.com

www.seaspace.com

EARTH ON DEMAND