

TERASCAN® EDUCATIONAL COMPUTER TEC

PRODUCT OVERVIEW

The TeraScan® Educational Computer (TEC) is a compact, all-in-one processing computer for use in schools, universities and non-profits in the teaching of satellite remote sensing. The computer and monitor are combined in an integrated space saving design by HP. TEC runs the full version of TeraScan® for educational institutions, and produces all the most popular derived satellite products.

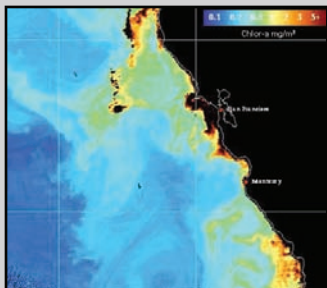
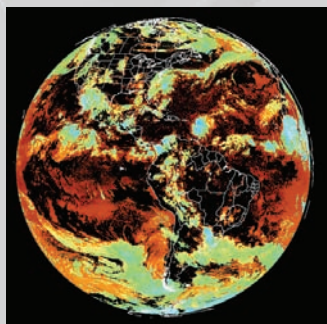
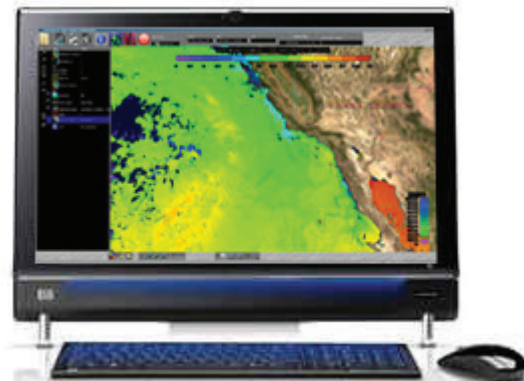
Users can easily task TEC to acquire raw data from international centers such as NASA and NOAA by choosing a region of interest and time period. Available data sets include MODIS, HRPT (from NOAA and MetOp), GOES, and MTSAT. Once processed into the desired data products, students can use TEC to query the data with multiple tools, run movie loops of multiple data sets, create overlays, and more.

TEC is sold as a single unit, but multiple units can be purchased to create a satellite remote sensing lab. Software-only versions of TEC will be available in the near future, to be installed in existing computer labs.

Contact sales@seaspace.com or 858-746-1100 for more information.

KEY FEATURES

- All-in-one computer and 24" monitor
- 8 GB RAM, 1.0 TB Hard Drive, quad core processor
- Software-only version available soon
- Our popular TeraScan® software for educational institutions
- Retrieves and processes MODIS, HRPT, GOES and MTSAT data
- Produces all common products such as SST, chlorophyll, NDVI, monthly composites, and more...
- Affordable price: \$8500 USD
- Buy multiple units to create an entire Earth Science computer lab



From Top:

GOES-12 Cloud Top Temperature;
MODIS Chlorophyll-a;
A student using TEC.



13000 Gregg Street, Suite A
Poway, California 92064 USA
Tel: 1-858-746-1100
Fax: 1-858-746-1199
sales@seaspace.com
www.seaspace.com
EARTH ON DEMAND

