

RAPID ENVIRONMENTAL PROCESSING SYSTEM

REPS™

PRODUCT OVERVIEW

SeaSpace Corporation, the market leader in MODIS system installations, introduces REPS™. The Rapid Environmental Processing System (REPS™) is an end-to-end environmental data processing solution that automatically processes MODIS data from the Terra and Aqua satellites all the way from raw data to level 2 products.

Configuration files allow the user to process selected or all of the SeaSpace supported MODIS products, therefore further minimizing production time. Combined with a TeraScan® ground station, the process runs without any further intervention, and deposits all products into user specified locations. Updated MODIS algorithms are supplied to users through TeraScan® software updates.

REPS™ will support data processing from VIIRS on the NPP and JPSS satellites when launched. Contact sales@seaspace.com for more information.

MODIS PRODUCTS AND APPLICATIONS

CALIBRATION

- MOD 01 - Level 1A
- MOD 02 - Level 1B Calibrated Geolocated Radiances
- MOD 03 - Geolocation Dataset

ATMOSPHERE

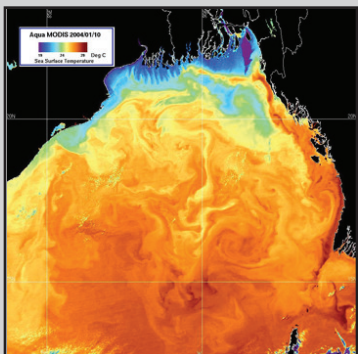
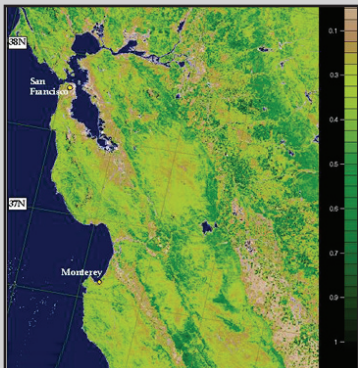
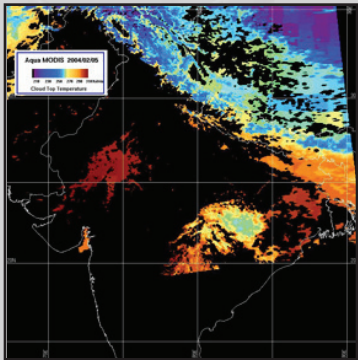
- MOD 04 - Aerosol Product
 - Aerosol Angstrom Coefficient
 - Aerosol Optical Depth
- MOD 05 - Total Precipitable Water (Water Vapor)
- MOD 06 - Cloud Product, Cloud Top, and Cloud Optical Depth
- MOD 07 - Atmospheric Profiles
- MOD 35 - Cloud Mask

LAND

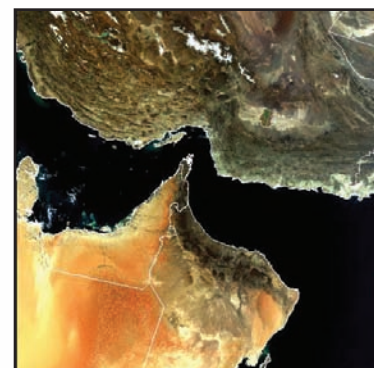
- MOD 11 - Land Surface Temperature & Emissivity
- MOD 13 - NDVI & Enhanced Vegetation Index (EVI)
- MOD 14 - Thermal Anomalies, Hot Spots, Active Fires & Biomass Burning

OCEAN

- MOD 18 - Normalized Water-Leaving Radiance
 - Pigment Concentration
 - Chlorophyll Fluorescence
 - Chlorophyll_a Pigment Concentration Photosynthetically Available Radiation (PAR)
 - Organic Matter Concentration
 - Suspended-Solids Concentration
 - Coccolith Concentration
 - Ocean Water Attenuation Coefficient, K490
 - Sea Surface Temperature
 - Total Absorption Coefficient
 - Ocean Aerosol Properties
 - Clear Water Epsilon
 - Diffuse Attenuation Coefficient at 490 nm



From Top: Cloud Top Temperature, NDVI, and SST MODIS products



Aqua MODIS RGB Image of Dubai

SEASPACE
13000 Gregg Street, Suite A
Poway, California 92064 USA
Tel: 1-858-746-1100
Fax: 1-858-746-1199
sales@seaspace.com
www.seaspace.com
EARTH ON DEMAND

