

1.5M L-BAND GROUND STATION

EODS-P1500 SERIES

PRODUCT OVERVIEW

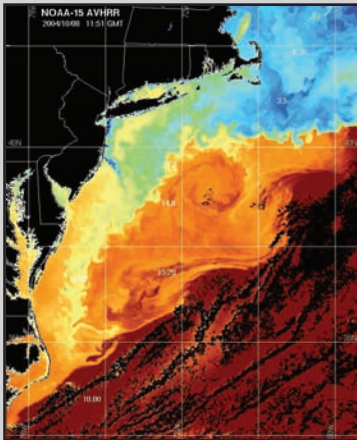
The 1.5m TeraScan® L-Band System utilizes a 1.5m reflector mounted on a 3-axis positioner installed inside a 1.8m radome. The radome size has been carefully matched to the antenna to minimize weight and overturning moment, effectively reducing site preparation requirements and costs.

Low-loss, impedance-matched radomes enable operation in extreme environments without sacrificing RF performance. Each antenna system is perfectly balanced in all 3 axes and exhibits no inherent backlash. There are no pointing/tracking errors associated with torsional stiffness since there is no wind or ice loading on the tracking system and the velocities and accelerations are kept extremely low.

The 1.5m TeraScan® System is also available with an S-Band feed, and as a ship-board system. Contact sales@seaspace.com for more information.



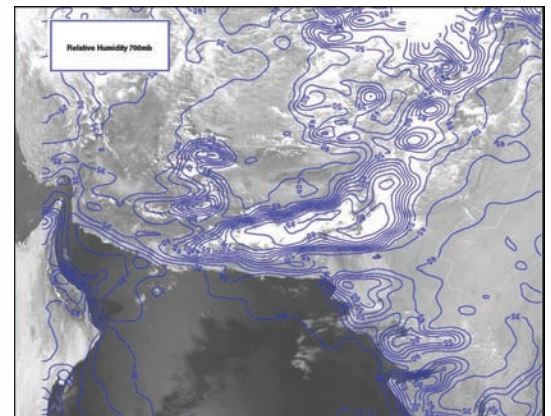
1.5m Antenna/Radome



NOAA SST Imagery

KEY FEATURES

- High tracking accuracies;
- Low velocity and acceleration requirements;
- No keyhole losses at any elevations; 3-axis, Elevation over Cross-Elevation over Azimuth configuration;
- Completely balanced system;
- Low-loss radome enclosure for all installations;
- Integrated tracking receiver;
- Pulse Width Modulation (PWM) servo control system.



NOAA-16 AMSU-A in TeraScan®



13000 Gregg Street, Suite A
Poway, California 92064 USA
Tel: 1-858-746-1100
Fax: 1-858-746-1199
sales@seaspace.com
www.seaspace.com
EARTH ON DEMAND



1.5M L-BAND GROUND STATION EODS-P1500 SERIES

SYSTEM SPECIFICATIONS

Radome	Material Diameter Height Weight Attenuation	Composite 2.0 m 2.0 m 41kg 0.15dB @ 1.7 GHz
Reflector	F/D Ratio Surface Tolerance Effective Diameter Material	0.390 ratio 0.020 inches 1.5m Solid Aluminum
Positioner	Elevation Range Azimuth Range Cross-El Range Max. Az. Velocity Max. El. Velocity Max. Cross-El. Velocity Maximum Acceleration Tracking Accuracy	0 - 90 degrees ±265 ± 20 degrees, active tracking axis 10.5 deg/sec 1.75 deg/sec 10.5 deg/sec 2.8 deg/sec ² 0.5 degrees
Integrated Feed/LNA/ Downconverter	Feed Type Polarization L-Band Input Frequency	Crossed Dipole RHCP 1670-1720 MHz
RF Performance	Antenna Gain G/T	25.9 dBic @ 1700 MHz 5.0 dB-K Min@ 1700MHz
Environmental Specs.	Operational Temperature Operational Humidity Operational Wind Speed Survival Wind Speed	-30 to 60 Celsius 0 to 100 % 242 Kph (150 mph) 242 Kph (150 mph)

ACQUISITION MODULE SPECS

Operating System: Linux
(RHEL and CentOS)

Input Signal Power: -90 to -50 dBm

Input Frequency: 126-154 MHz

Demodulation Types: BPSK, PSK

Supported Telemetries: NOAA HRPT,
SeaWiFS SWHRPT, FY-1D CHRPT,
METOP

Supported Data Encoding: NRZ,
NRZ-S, NRZ-M, Biphase-L



13000 Gregg Street, Suite A
Poway, California 92064 USA

Tel: 1-858-746-1100

Fax: 1-858-746-1199

sales@seospace.com

www.seospace.com

EARTH ON DEMAND